

Migrate Proline-Zero from a version (N-1) to a newer version(N)

Structure

Structure of Proline-Zero application, for example version 2.0.1, is as following:

Nom	Modifié le	Type	Taille
.prolinestudio	15/06/2021 09:33	Dossier de fichiers	
databases	16/11/2021 15:41	Dossier de fichiers	
fasta	12/04/2019 15:46	Dossier de fichiers	
mascot	09/11/2021 14:34	Dossier de fichiers	
mzdb	23/11/2021 10:48	Dossier de fichiers	
tmp	23/11/2021 10:49	Dossier de fichiers	

There are the required modules (PM-SequenceRepository, Proline-Admin, Proline-Cortex, Proline-Studio and postgres server pgsq) and a folder for preferences, work files and data (projects databases, mascot result files etc...)

New installation

Proline-Zero is an all-in-one solution distributed as a zip file. A “new installation” simply involves extracting this zip file and thus creating a new hierarchy ...

Example for version 2.1.2

Nom	Modifié le	Type	Taille
.prolinestudio	24/03/2022 14:33	Dossier de fichiers	
databases	24/03/2022 14:33	Dossier de fichiers	
fasta	16/12/2021 14:35	Dossier de fichiers	
mascot	26/02/2020 15:38	Dossier de fichiers	
mzdb	16/12/2021 14:35	Dossier de fichiers	
tmp	24/03/2022 14:32	Dossier de fichiers	

Data migration

In order to get back your previous data in a new installation, some copy will be necessary **BEFORE** running the new Proline-Zero. If you have already started the new Proline-Zero see “Specificities” below.

To migrate data, you will have to:

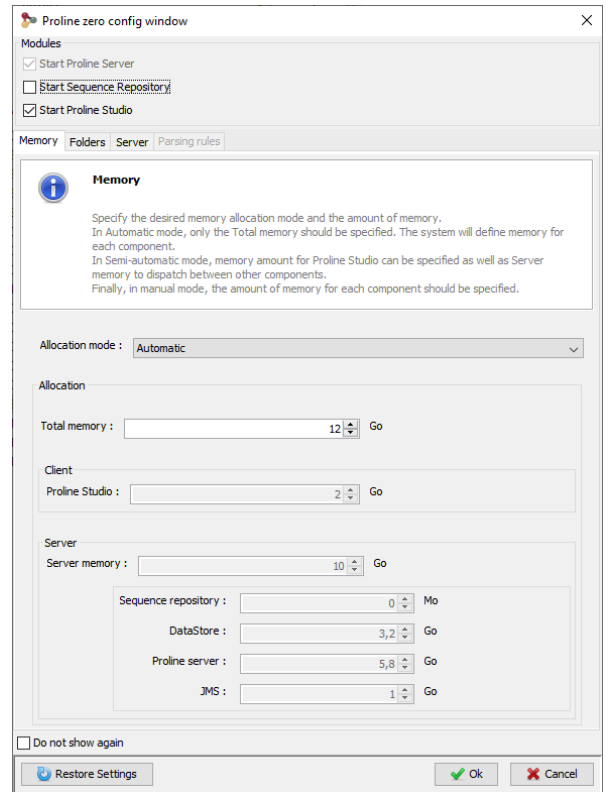
- Copy some files (preferred than a move in a first step in case an error occurs) from directory `<Proline-Zero-Version_N-1>\data` to `<Proline-Zero-Version_N>\data`
 - Folder `...\data\databases` in `...\data`
 - Folders `...\data\fasta` and `...\data\mzdb` in `...\data`

- Files ...*data*\mascot*. * in ...*data*\mascot*mascot* may contain subfolders which should be copied as well.
- Copy and overwrite file ...*data*\prolinestudio*config*\Preferences.properties in ...*data*\prolinestudio*config*\
- NOTE: *data*\tmp folder and other files in *data*\prolinestudio* **should not be copied**
- **NOTE:** A graphical interface allows you to set almost all parameters from *proline_launcher.config*, so it's best to change your settings again through this interface. If you prefer to modify them manually :
 - If you have changed default Proline-Zero configuration you will have to copy these specific parameters from <Proline-Zero-Version_N>\proline_launcher.config in new file <Proline-Zero-Version_N>\proline_launcher.config
 - You **CAN NOT** replace new proline_launcher.config with previous one as modules versions are specified in this file and some parameter names should have been modified.
 - Parameters names which may have change (depending on versions)
 - server_max_memory □ total_max_memory
 - postgresql_port □ data_store_port : should not be changed without a good reason ;)
 - New parameters
 - studio_max_memory : to specify memory for the GUI application
 - adjust_memory: should be kept to on (or commented). A new memory management will be available since Proline-Zero 2.2.0
- Still in <Proline-Zero-Version_N>\proline_launcher.config,
 - To force migration of all needed database set parameter "force_datastore_update = on" for the first time you will run Proline-Zero. Then this parameter can be set to off again.

Specificities and warning:

- If you **have already run the new Proline-Zero !!**
 - In this case, project databases have been initialized. You will need to delete it before copying the previous databases. **It is NOT possible to merge databases** from two Proline-Zero to keep projects from both installations!
 - Delete (or rename) <Proline-Zero-Version_N>\data\databases\pg before you copy this folder from the previous version (see above).
- You want to migrate data from **Proline-Zero 2.0.1 (or less) to Proline-Zero 2.1.0 (or higher)**. The postgresql server version (pgsql) is not the same. In order to be able to read databases created in Proline 2.0.1 in the new Proline-Zero you will have to use previous postgresql server
 - Rename folder <Proline-Zero-Version_N>\pgsql to <Proline-Zero-Version_N>\pgsql_9.6

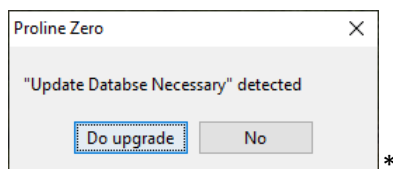
- Copy folder <Proline-Zero-Version_N-1>\pgsql to <Proline-Zero-Version_N>\
- You want to migrate data from **Proline-Zero 2.1.3 (or less) to Proline-Zero 2.2.0 (or higher)**.
The Proline-Zero configuration file, *proline_launcher.config*, is not structured in the same way. The new version of Proline-Zero now displays a GUI for configuration. You will have to report previous values in this display.



☒ BEFORE RUNNING new Proline-Zero, be sure the application structure is as expected

Running new version

Once all modifications and copy have been done, you can launch the new version of Proline-Zero. Depending on the previous and new version, a pop-up should appear indicating that an update is necessary. You should click "Do upgrade" in order to be able to launch Proline-Zero.



You should recover your projects and data!